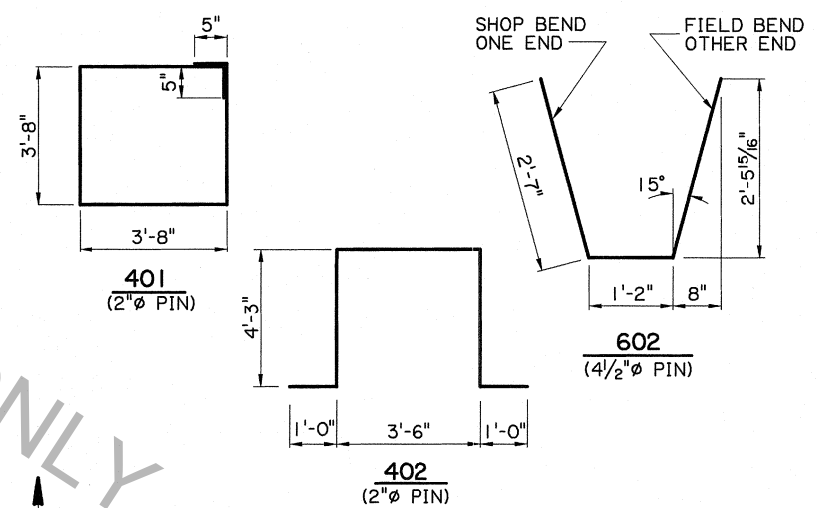


ESTIMATED QUANTITIES (ONE FOOTING)

BAR NO.	NO.	UNIT LENGTH	TOTAL LENGTH	LOCATION
601	72	7'-8"	552'-0"	FOOTING
602	8	6'-4"	50'-8"	FOOTING
TOTAL NO. 6 BARS = 602'-8"				905 LBS.
401	4	15'-6"	62'-0"	STIRRUPS IN FOOTING
402	6	14'-0"	84'-0"	STIRRUPS IN FOOTING
TOTAL NO. 4 BARS = 146'-0"				98 LBS.
TOTAL DEFORMED REINFORCING STEEL =				1003 LBS.
TOTAL CLASS A1 CONCRETE =				10.17 CU.YDS.
STRUCTURAL EXCAVATION =				34.7 CU.YDS.
STRUCTURAL STEEL (ANCHOR BOLTS) =				578 LBS.
TREATED TIMBER PILES =				200 LIN.FT.

FOOTING PILE DATA TABLE

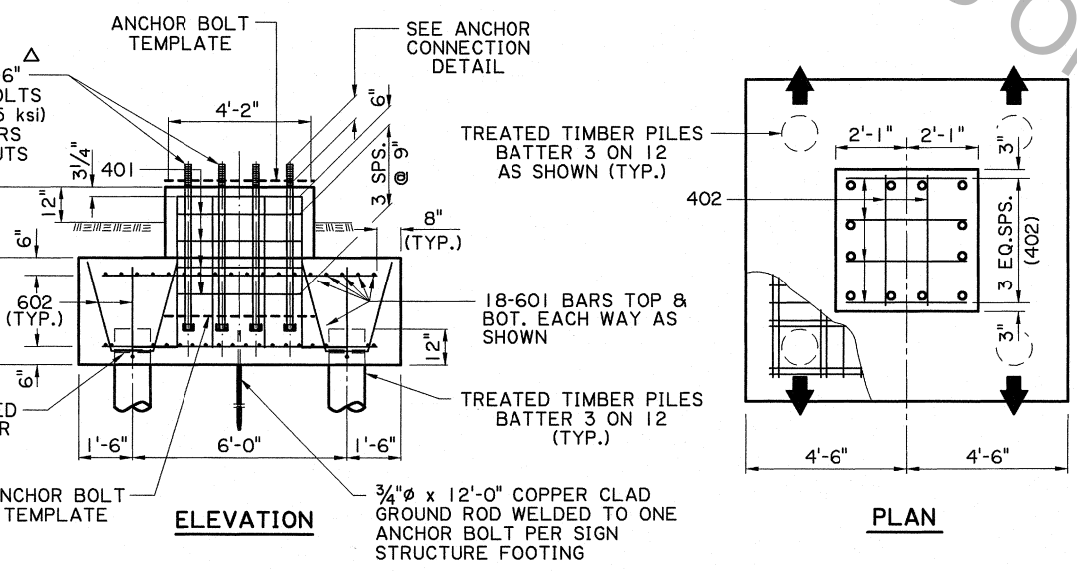
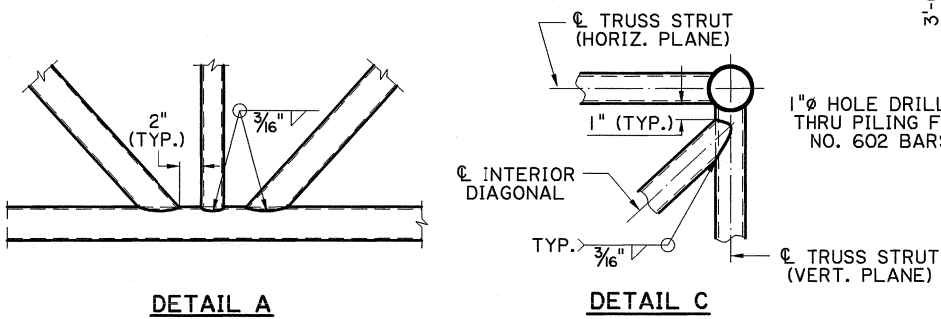
WIND ZONE	PILE SIZE (IN.)		PILE LENGTH (FT.)
	BUTT	TIP	
1	11.6	8	45
2	11.9	8	50
3	13.9	8	75



* IN SPECIAL CASES, WITH PRIOR APPROVAL FROM THE D.O.T.D. BRIDGE DESIGN ENGINEER, THIS DIMENSION MAY BE EXCEEDED.

△ ANCHOR BOLTS TO BE TIGHTENED ACCORDING TO SPECIAL PROVISIONS. ANCHOR BOLTS SHALL BE FURNISHED IN A PREPOSITIONED ANCHOR BOLT ASSEMBLY. (TWO TEMPLATES REQUIRED)

● ALTERNATE CAP: FRICTION WATER TIGHT CAP MAY BE USED ON EXPOSED ENDS OF ALL PIPES. SEE DETAILS.



NOTES:

ALL TRUSS AND POST MEMBERS SHALL BE STEEL AND SHALL BE GALVANIZED IN ACCORDANCE WITH ASTM A-123.

THIS SHEET TO BE USED WITH THE CANTILEVER DESIGN TABLES AND THE GENERAL NOTES SHEET.

THE MAXIMUM PILE DESIGN LOAD IS 30 TONS PER PILE.

☒ DRILLED SHAFT ALTERNATE ALLOWED. SEE SHT. NO. 13 OF 16.

KURT M. BRAUNER
REG. NO. 30567
REGISTERED PROFESSIONAL ENGINEER
IN
LOUISIANA
8/29/11

CHING-NIEN TSAI
REG. NO. 23082
REGISTERED PROFESSIONAL ENGINEER
IN
LOUISIANA
8/29/11

FOR GEOTECHNICAL INFORMATION ONLY

SHEET NUMBER		DESIGNED	K. BRAUNER	CHECKED	C. PORTER	DATE	JAN. 2011	PROJECT	9 OF 16
PARISH		DRAWN	K. BRAUNER	DATE					
FEDERAL PROJECT		CHECKED	K. BRAUNER	DATE					
STATE PROJECT		DATE							
K.M.B. BY									
02-13-17 UPDATED FOR 2016 SPECIFICATIONS									
DATE									
REVISION DESCRIPTION									

GROUND MOUNTED CANTILEVER (STEEL)

BD.2.7.1.0.9 - OVERHEAD TRAFFIC SIGNS